

Main Features:-

- ◆ Stainless Wafer Butterfly Valve PTFE Liner
- ◆ Suits PN10 / PN16 and ANSI 150 Flanges
- ◆ ISO Mount 5211 for Direct Mount Actuation
- ◆ Stainless Steel Gearbox Available as Option
- ◆ -10 to + 130C Temperature Rating PN16

*Temperature and pressure determined by valve body, seat etc.



Suitable Applications & Approvals:



SERIES 2002

SERIES 2003

EPDM LINER

FKM VITON LINER

MANUFACTURER:

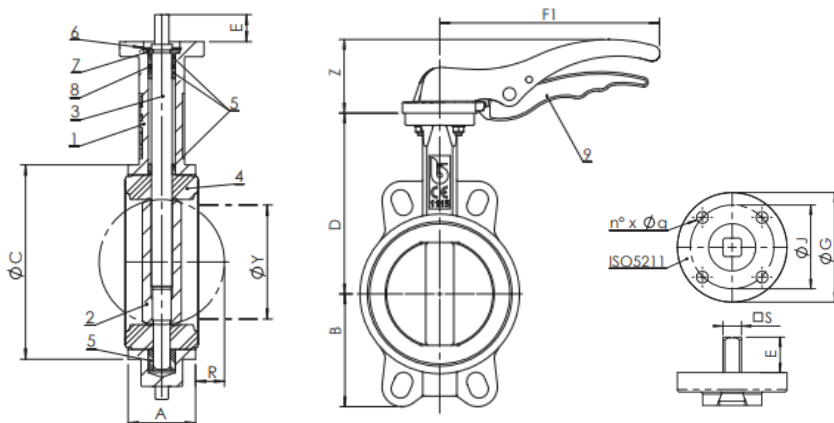
AVOL
INDUSTRIAL VALVES

SERIES: 20001-02-03

SIZE	CODE	A	D	B	F1	Z	R	ISO	G	J	STEM	E	Nm	Kg
2"	20001-09	43	126	62	170	50	5	F05	65	50	9	21	13	2.1
2 1/2"	20001-10	46	136	69	170	50	9	F05	65	50	9	21	21	2.4
3"	20001-11	46	150	90	206	69	17	F05	65	50	11	21	28	3.1
4"	20001-12	52	170	106	206	69	26	F05	65	50	11	21	44	4.1
5"	20001-13	56	180	119	285	90	34	F07	90	70	14	27	68	6.1
6"	20001-14	56	200	131	-	-	50	F07	90	70	14	27	99	11.1
8"	20001-16	60	230	166	-	-	71	F10	125	102	17	27	162	22.3
10"	20001-18	CALL	CALL	CALL	CALL	CALL	CALL	CALL	CALL	CALL	CALL	CALL	CALL	CALL

Please note that our Series 2001-2002-2003 are ALL stainless steel bodied valves, with only the liner changing from one to the other. Series 2001 = PTFE Series 2002 = EPDM and Series 2003 = FKM (Viton)

DIMENSIONAL DRAWING OF VALVE



MATERIALS OF CONSTRUCTION

BODY	CF8M SS
DISC	CF8M SS
LINER	PTFE
STEM	316 SS
ORINGS	VITON
PRESSURE	PN16
TEMP	-10 to +130C



BUTTERFLY VALVES

ALLVALVES
O N L I N E



Speak to our technical sales team today for details on actuated packages using the Series 2001 butterfly valve, available with electric or pneumatic actuators.

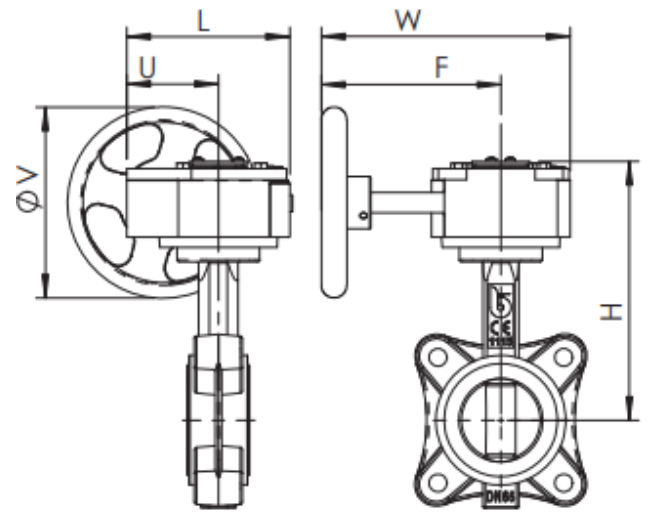
SERIES: 20001-02-03

MANUFACTURER: **AVOL**
INDUSTRIAL VALVES

PRESSURE / TEMPERATURE / CV CHARTS

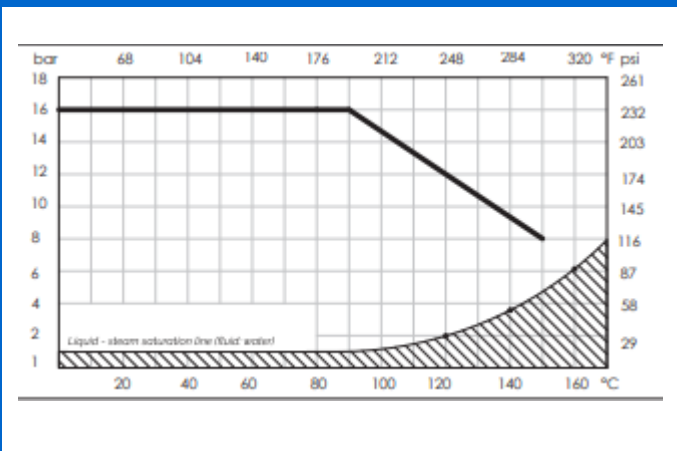
SIZE	CODE	L	U	H	W	G	V
2"	20001-09	130	77	188	225	170	150
2 1/2"	20001-10	130	77	198	225	170	150
3"	20001-11	130	77	212	225	170	150
4"	20001-12	130	77	232	225	170	150
5"	20001-13	130	77	242	225	170	150
6"	20001-14	130	77	262	225	170	150
8"	20001-16	180	104	308	338	260	300
10"	20001-18	CALL	CALL	CALL	CALL	CALL	CALL

GEARBOX DIMENSIONS

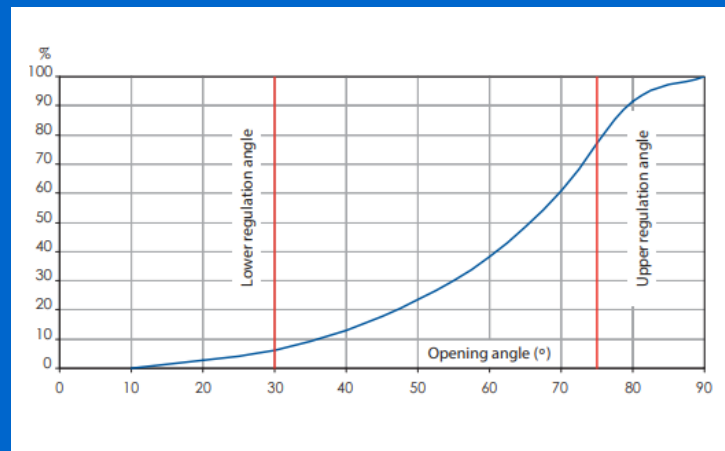


*Ask our sales team today about options for stainless steel gearboxes.

PRESSURE & TEMP CHART



FLOW CHART - Kv RATES BE-



SIZE	CODE	10	20	30	40	50	60	70	80	90
2"	20001-09	0.05	2.6	6	13	23	38	60	91	99
2 1/2"	20001-10	0.09	3.8	14	33	53	75	98	108	108
3"	20001-11	0.17	7.8	16	34	60	100	158	237	261
4"	20001-12	0.26	15	31	67	120	199	314	471	518
5"	20001-13	0.43	25	53	115	205	339	535	803	883
6"	20001-14	0.69	39	82	177	316	522	827	1241	1364
8"	20001-16	2.6	52	142	250	450	713	1122	1723	2716
10"	20001-18	CALL	CALL	CALL	CALL	CALL	CALL	CALL	CALL	CALL



T +44 (0)1386 552369
E sales@allvalves.co.uk

W www.allvalves.co.uk
F +44 (0)1386 554227